

**L'ANSE CREUSE HIGH SCHOOL NORTH
INSTRUMENTAL MUSIC DEPARTMENT**

2025-2026 HANDBOOK



Daniel J. Griffith, Director

Email: griffda@lc-ps.org • Voicemail: ext. 2623

**23700 21 Mile Road
Macomb, Michigan 48042
Phone: (586) 493-5270**

WWW.LCNBANDS.COM

TABLE OF CONTENTS

Introduction

Message from the Director2

Administration, Instructional Staff2

Grading and Evaluation3

Band Member Responsibilities

General Classroom Rules and Procedures4

Practice Requirements4

School Provided Equipment

Instruments4

Locks & Lockers4

Folders4

Attendance Policy5

Concert Band Uniforms6

Code of Conduct6

Instrument Care and Repair7

Booster Board7

Fundraisers7

Communications7

Calendar of Events8

Parent/Student Commitment Form10



2025 - 2026 L'ANSE CREUSE HIGH SCHOOL NORTH INSTRUMENTAL MUSIC HANDBOOK

Introduction

A Message from the Director

Welcome to the LCHS-North Band program! There are many opportunities that await all of us throughout the year, but we will need to work as a team while we put together a program that has excellence, integrity and pride. The goal is to expand our musical knowledge and aptitude through daily practice, rehearsing, and listening. It is important that EVERY member realizes they are an important part of the program and the success the ensembles achieve is a direct result of the hard work we all put in!

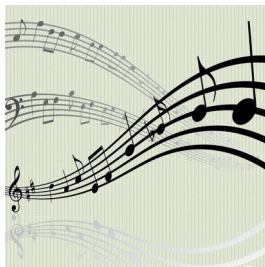
This handbook contains much of the information that you will need to be successful. The most important piece of information to take away from this is the calendar of events. Understand that performance opportunities will arise during the year and the calendar is a 'living' document. Be sure to access all forms of communication from myself and the band boosters. Info on these sources can be found on page 7.

We look forward to making music with all of you this year!

Mr. Daniel J. Griffith, Director of Bands

LCN Administration and Instructional Staff

Mr. Nicholas Ellul.....	LCHS-N Principal
Ms. Melissa Chase.....	LCHS-N Assistant Principal
Mr. Mitch Osadchuk.....	LCHS-N Assistant Principal
Mr. Michael Poljanac.....	LCHS-N Dean of Students
Mr. Daniel J. Griffith.....	LCHS-N Instrumental Music Director
Mr. Scott A. Oranchak.....	Fine Arts Paraprofessional



2025 - 2026 L'ANSE CREUSE HIGH SCHOOL NORTH INSTRUMENTAL MUSIC HANDBOOK

Grading and Evaluation

Students in the instrumental music program at LCHS-N will be assessed on both performance and written skills.

Playing tests will occur every 2-3 weeks (roughly) and will alternate between a scale pattern exercise and a 1:1 playing evaluation of traditional instrumental etudes.

The goal of the assessments is to ensure all students are being challenged and growing as performers and musicians.

Your grade in band will be comprised of 2 components:

- 30% Formative Assessments: These will include written, playing, and rhythmic assignments/tests throughout the semester along with daily participation. This assessment is meant more to be a guidance tool for student growth.
 - * Daily Participation Points (3 points possible each Day):
 - On Time/Warmed-Up/Tuned 1 point
 - Prepared with Music 1 point
 - Playing on instrument during class 1 point
- 70% Summative Assessments: This is a formal evaluation on performance assignments and learning goals. Concerts, etudes, and scale tests are the primary focus of summative assessments.
 - * Performance Points (50 points for each performance)
 - Unexcused Absence – Loss of 50 Performance Points
 - Not in Proper Uniform – Loss of 20 Performance Points
 - Disrespectful Etiquette – Loss of 30 Performance Points
 - Tardy – Loss of 10 Performance Points

Each band student's marking period grade will be based on the LCPS Grading Scale and final grades will be calculated 1st Quarter 40%, 2nd Quarter 40%, Final Exam 20%.



2025 - 2026 L'ANSE CREUSE HIGH SCHOOL NORTH INSTRUMENTAL MUSIC HANDBOOK

Band Member Responsibilities

General Classroom Rules and Procedures

Specific classroom procedures will be covered with students during the first week of school. These expectations will include policies regarding self-warm-up time, talking, cell phones, and bathroom use.

Practice Requirements

It is imperative that each student maintain a consistent level of practice. This is important from the standpoint of being prepared for performances and rehearsals. Everyone has a vital role and part within the ensemble, so PRACTICE, PRACTICE, PRACTICE!!! At the high school level, we will not track individual practice through records. Instead, individual preparation may be checked through spot checks in class.

School Provided Equipment

Concert Instruments

Thanks to the generosity of the L'Anse Creuse community, we have many high-quality instruments for use by our students. General maintenance for the school instrument will be the responsibility of the assigned student. Outside of natural wear and tear, students will be required to pay for necessary repairs due to carelessness and neglect. A contract must be signed by student and parent and returned to Mr. Griffith within one week of receiving a school instrument. Instructions on specific care will be covered at the start of the school year (or upon signing out an instrument).

All school instruments will be checked-in at the end of the year for inventory and maintenance purposes. Students continuing with the LCN Instrumental Music Program may be allowed to immediately re-check the instrument out if no maintenance is required.

Locks and Lockers

All concert ensemble students will be assigned a band locker with combination lock at the high school. Students will be responsible for the lock. Lockers do not function properly unless students use the lock.

Folders

Each student will be assigned a Concert Folder. All concert folders should remain at school, except for concerts. Paper folders will be made available for students to take home music for practice. Students will be responsible for their folder.

Band Member Responsibilities

Attendance Policy

The unique nature of the band class has, as part of the curriculum, performances outside of the scheduled school day. The success of our organization and ensembles depends directly upon the full and complete participation of all of its members. Calendars are provided at the start of each school year and are updated and available on the website and in the classrooms. The performance expectations of the ensemble are outlined in the course description published prior to course selections and the band handbook as a reminder at the start of the year. It is reasonably expected that with this notice, as a member of the L'Anse Creuse HS North Bands, you will attend every rehearsal and performance. Please do not schedule avoidable conflicts with rehearsals or performances. These include job commitments, family vacations, baby-sitting, doctor and dentist appointments, senior pictures, etc. Band is an academic class and is graded. Attendance will be taken at every rehearsal and performance and there is nothing that can truly replace the absence of a performance. To begin the potential make-up process, a parent must call the band director at least two weeks before the requested rehearsal or four weeks before the requested performance detailing the situation, and the student must see the band director for the details of the make-up assignment.

School-Related Conflicts:

It is expected that students who choose to participate in several activities or classes that have an “after-school” practice/performance component will make every effort to completely fulfill their obligation to each group. In many cases, splitting time equally between the two simultaneous activities is the best compromise. Graded academic activities, such as performances within the arts, will take precedence over non-graded extra-curricular activities.

School-Related Athletics:

Performances/games take precedence over practices/meetings. The student and/or parents should resolve practice conflicts by giving advanced notification to that student's coach. If possible, the director will make special arrangements to limit the amount of practice time missed.

Performance/game conflicts should be resolved with full understanding and cooperation of all involved including complete and open communication between the students, teachers, parents, and coaches. Students can only be excused if participating in the sporting event's game. If possible, arrangements may be made to split time between the two events.

Because our calendar is available from the beginning of the year, it is expected that students check their schedule against the band schedule. Any conflicts should be addressed at the beginning of a sport's/activity's season. All conflicts must be worked out no fewer than at least two weeks before the requested rehearsal or four weeks before the requested performance. This will allow coaches and directors to make the necessary adjustments to their ensemble or team.

2025 - 2026 L'ANSE CREUSE HIGH SCHOOL NORTH INSTRUMENTAL MUSIC HANDBOOK

Attendance Policy (cont.)

Emergencies/Illness:

If you suddenly miss a rehearsal or performance due to an emergency or illness, a parent must attempt to contact the director within 24 hours of the missed event. This is still required if the student has been excused from school during the day.

Make-Up Work:

Upon the notice of an excused absence, an assignment will be given to earn the points lost while missing the performance. The assignment due date will be determined by the director and will be completed before the end of the marking period that contained the missed performance. The director reserves the right to deny make-up work to a student who does not provide four weeks or more notice for missing a performance. Partial credit may also be given for situations that arise within the four-week window. For emergency absences, the student is held responsible for the missed performance and should arrange to get the make-up assignment with-in five days of the performance. It is the student's responsibility to arrange for and complete the required assignment. Failure to complete the assignment within the time frame allotted will result in a "0" (zero) entered into the grade book for that performance.

Concert Band Uniforms

For the concert band season, LCN Band students will be wearing all black for all concert performances. Students will need to supply their own concert outfit based on the requirements below:

Girls – Black slacks or long dress (no short dresses/skirts), black blouse or shirt, black shoes. If you choose to wear socks, please wear black socks.

Boys – Black slacks, black button-up collared shirt, black belt, black shoes, long black socks. Shirts should not have any graphics (other than manufacturers logo). Shoes must be all black (no colored logo or soles). A tie is optional. If you wear a tie, we request it be a conservative color.

Code of Conduct

Each band member is a representative of our school and our community. Our code of conduct applies to all band activities, in or out of uniform, at school, in our community and out of town. We and your parents expect you to act in an appropriate manner, including appearance, behavior, and language. Band members should be considerate of other organizations, students, staff, and chaperones. Please show respect for other people's property. Individual problems will be dealt with in accordance to the severity of the situation. This includes being sent home, at your expense, if we are out of town. Of course, alcoholic beverages, smoking, vaping, and illegal drugs are absolutely prohibited. Simply remember that all school rules are in effect at any band function and use common sense.

2025 - 2026 L'ANSE CREUSE HIGH SCHOOL NORTH INSTRUMENTAL MUSIC HANDBOOK

Instrument Care

It is the student's responsibility to take care of their instrument, and keep it in good working order. This applies to school owned instruments as well as individually owned instruments. If you need repairs, it is up to you to see the director as soon as possible. If the director cannot fix the problem, it will be the responsibility of the students, and or parents, to take the instrument to the repair shop. Please take care of all repairs well in advance of any performances we might have. It is recommended that you take your instrumental music needs to either of the following places:

A&G Central, 51170 Romeo Plank Rd, Macomb, MI 48042.....(586) 677-3784

Ardis Music, 49 N Walnut, Mt Clemens, MI 48043.....(586) 468-0282

Band Booster Organization

Any parent or guardian with a member of any instrumental ensemble in the LCN band program is automatically a member of the Band Boosters. The Band Boosters support the LCN Band program through fundraising and volunteering at events. Running a successful instrumental music program requires a great deal of support. To stay up to date on booster activities, join the band app parent group, or check out the Facebook page (L'Anse Creuse High School North Bands). To find out how you can help, reach out directly to the boosters via email (lcbandboosters@gmail.com). The general membership of the band boosters meets four or times per year. These dates can be found on the band's calendar.

LCN Band Booster Board

President	Hope Comerford
Vice-President	Angela Ressler
Secretary	Sharon Baker
Treasurer	Kenneth Grix

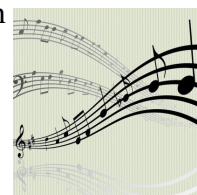


Fundraisers

The LCN Band Boosters have several events and activities that raise funds for the band, in general, as well as individual students. The biggest of these fundraisers are the Winter Craft Show (December), Spring Craft Show (April), and hosting MSBOA Marching Band Festival (October). For more information regarding fundraisers, see the band website, or contact the band boosters at lcbandboosters@gmail.com.

Communications

The bands and band boosters utilize a variety of communication options. Schoology is a good source to find many curriculum based needs for students. For up to date announcements, parents are encouraged to follow the booster Facebook page (L'Anse Creuse High School North Bands), the band website (www.lcnbands.com), and/or the concert band Band App group. This group will be created upon the completion of the Marching Band season in late October. Keep an eye out on the Facebook page and the website for a link to join the BAND App group!



L'ANSE CREUSE HIGH SCHOOL NORTH INSTRUMENTAL MUSIC DEPARTMENT

23700 Twenty One Mile Road

Macomb, MI 48042

Phone: (586) 493-5270 • Fax: (586) 493-5275



CALENDAR OF EVENTS - as of 08/06/25

CHECK WWW.LCNBANDS.COM/CALENDAR FOR UP-TO-DATE INFORMATION

DATE	ACTIVITY	REPORT TIME	EVENT TIME
September**			
05 (Fri)	Home Football vs. Dakota HS (MB) - Senior Night	4:00 pm	7:00pm
06 (Sat)	Bottle & Can Drive #2 (MB)	----	9:00 am – 4:00 pm
13 (Sat)	Super Saturday (MB)	----	9:00 am – 5:00 pm
17 (Wed)	Band Booster Meeting	----	7:00pm
19 (Fri)	Home Football vs Roseville HS (MB)	4:00pm	7:00pm
20 (Sat)	Trenton HS Marching Band Invitational (MB)	TBA	TBA
27 (Sat)	Troy Athens HS Marching Band Invitational (MB)	TBA	TBA
October**			
03 (Fri)	Home Football vs Grosse Pointe South HS (MB) - Homecoming Game/Parade	3:34pm	7:00pm
08 (Wed)	MSBOA District 16 Marching Band Festival – Hosted at LCN (MB)	TBA	TBA
11 (Sat)	Chippewa Valley HS Marching Band Invitational (MB)	TBA	TBA
17 (Fri)	Home Football vs Stevenson HS (MB) - with 8th Grade Bands	4:00pm	7:00pm
24 (Fri)	Home Football vs Richmond HS (MB)	4:00pm	7:00pm
November			
13 (Thur)	Band Booster Meeting	----	7:00pm
22 (Sat)	Mt. Clemens Santa Parade (MB)	TBA	10:00am-11:30am
December			
05 (Fri)	Winter Craft Show Set-Up	-----	6:00pm – 9:00pm
06 (Sat)	Winter Craft Show (ALL Concert Ensembles Perform)	TBA	8:00am – 7:00pm
17 (Wed)	Winter Instrumental Music Concert (ALL)	TBA	7:00 pm
January			
29 (Thur)	North Side Band-O-Rama during school day (WS)	----	----
31 (Sat)	MSBOA District 16 Chamber Ensemble Festival (V)	----	----
February			
07 (Sat)	MSBOA District 16 High School Solo & Ensemble Festival (V)	----	----
March			
03 (Tues)	Pre-Festival Concert (ALL Concert Bands)	TBA	TBA
04 (Wed)	Band Booster Meeting	----	7:00pm
11 (We), 12 (Th), or 13 (Fr)	MSBOA District 16 Band Festival (ALL Concert Bands) – Location TBA	TBA	TBA
21 (Sat)	MSBOA State Solo and Ensemble Festival (V)	----	----
April			
9 (Thur)	Band Booster Meeting	----	7:00pm
17 (Fri)	Spring Craft Show Set-Up	TBA	6:00pm – 9:00pm
18 (Sat)	Spring Craft Show (ALL)	----	8:00am – 7:00pm
30 (Thur)	Spring Instrumental Music Concert (ALL Concert Ensembles)	TBA	7:00 pm
May			
TBD	Instrumental Music Banquet (V)	----	6:00 pm
07 (Thur)	Band Booster Meeting	----	7:00pm
19 (Tues)	New Marcher Orientation (2025-2026 MB)	----	6:00 pm – 8:00pm
27 (Wed)	Graduation—(WS/SB)	----	TBA
June			
05, 08, 09 (Fr, Mo, Tu)	Mini-Camp (26-27 MB)	—	TBA

(MB = Marching Band, COB = 9th Grade Band, SB =Symphony Band, WS = Wind Symphony, JE = Jazz Ensemble, ALL – All Ensembles, V = Voluntary)

**Please note that from August through mid-October the Marching Band class meets in the evenings.

Please refer to the **Marching Band Class Schedule** for exact dates and times.

Daniel J. Griffith, Director

Phone Extension: 2024 Voicemail: 2623

Email: griffda@lc-ps.org

Scott A. Oranchak, Paraprofessional

Phone Extension: 2025

Email: orancsc@lc-ps.org

2025 - 2026 L'ANSE CREUSE HIGH SCHOOL NORTH INSTRUMENTAL MUSIC HANDBOOK

L'Anse Creuse High School North Instrumental Music Contract

(Return this page to school no later than Friday, September 5th)

I, _____, have received the band handbook.
(Print student's name)

I certify that I understand the standards and expectations in the handbook.

(Student Signature)

(Date)

I, the parent/guardian, understand the standards and expectations in the handbook.

(Parent/Guardian Signature)

(Date)

LCN Instrumental Music Transportation & Emergency Permission

I give my son/daughter, _____, permission to ride the bus with the band to all district band events this school year, 2025-2026.

Emergency Information:

Emergency Contact Person

Phone Number

Alternate Contact Person

Phone Number

Insurance Company

Policy Number

As a parent or legal guardian, I remain fully responsible for any legal consequences that may result from any personal actions taken by the named student. My son/daughter knows that all school rules must be obeyed. I give permission to the chaperones and director to seek emergency medical attention for my child if necessary.

(Parent Signature)

(Date)